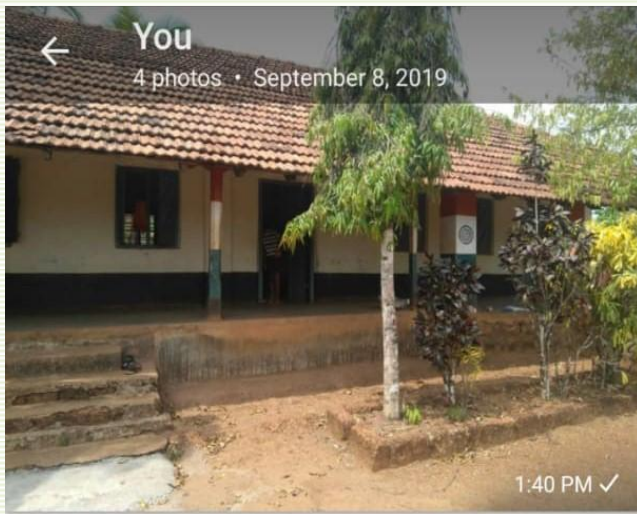


**DEVELOPMENT PROCESS OF KOLCHAR GOVERNMENT HIGHER
PRIMARY SCHOOL, SULLYA**

A fully developed Government Higher Primary school, Kolchar, Aletti Village Panchayath of Sullya Taluk consists of 6 very good teachers and 98 Students of belonging to Backward caste and Minority communities. Parents who earn livelihood in labour work earning a meager income encourage their children towards education.



This school is in remote place 12 km far to sullya town, there was no bus facility. In the beginning stage of PADI intervention we have to take private vehicle. Also forest elephants were more since these

area surrounded with forest. Children go to school in fear of these Elephants.



SDMC MEETING IN INITIAL STAGE

When PADI intervened it has been noticed many bottlenecks and issues hindering the children's joyful education.

One of the major issues was, the absence of quality of education for children, and parents participation. For the sake of a system, SDMC members were nominated but to no



avail. These members were not showing interests in attending the meetings. Therefore, as whole, nil interests were expressed by the teachers, children or parents. Sometimes, if 2 to 3 SDMC members were found to be meeting each other, they never discussed on school development aspects or children issues.

One of PADI's initiative was Quality Education in Government Primary schools and as per the Project plan of action it was prepared a tool for the self assessment of SDMCs. At the initial stage, in Sullya the Resource Persons of Education Resource Centre involved themselves with the School Teachers and SDMC through the Trainings, Awareness on Child Friendly School and the roles and responsibilities of SDMCs. Assessment tool prepared by the Project was applied to get the ideas of the situation of the Quality Education in the school.

By this Assessment Project come to know many deficient and scarce in management. i.e. SDMC is not aware of any of its roles and responsibilities, there is no monitoring of children new admissions, school drop outs, monitoring of children learning Progress, Planning for infrastructural development, moreover there is no quorum in the meetings of SDM Commtee of the school. Through this Assessment Project deficiencies and lapses

were noticed, to list out a few :

SDMC were unaware of its roles and responsibilities

Lack of monitoring of children new admissions, school drop outs cases, monitoring of children learning Progress and Planning for infrastructural development

No required quorum was available in the meetings of SDM Commtee of the school.

As per the Project Plan PADI organized Education Cluster Level Training for Cluster level Education Officers and SDMC members. Kolcharu school is one among 7 schools of sullya-Aletty Cluster. With the completion of Cluster level Training , training for the School SDMC members were started , only to understand their roles and responsibilities in the School's overall Development. Thus, the regular intervention by the PADI and Education Resource Centre of Sullya Taluk of Dakshina Kannada at every phases, has brought remarkable changes within a span of 3 years.

Renovated School with proper place for children play ground and sophisticated sports materials too.

2nd picture School stood 1st in district level in the handwriting competition, where the children learning level was very low, is becoming improved even in handwriting too.



School Midday Meal provision with proper utensils and clean drinking water, even they started to grow vegetables



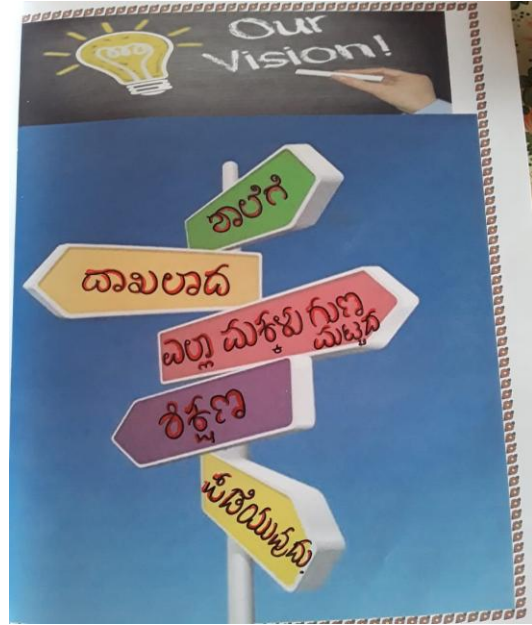
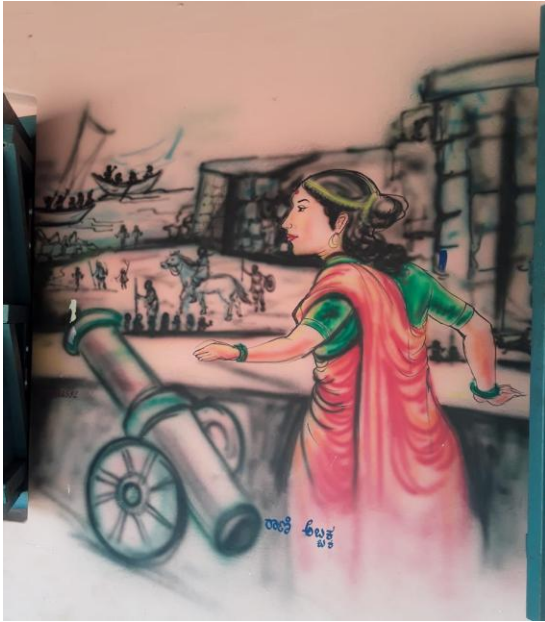
Slowly SDMC committee started to take up its meeting with the quorum and they were trained on the subject of COMMUNITY PARTICIPATION which is very important factor in the School Development Aspect.

One more step forward, A training organized on HOW TO PREPARE SDP AND HOW THE SAME HAS TO BE PROCEEDED TO THE RESPECTIVE UNITS. In the above training SDMC members were included with the Grama Panchayath Members, Teachers Association members, Student Representatives, Health Department Personnel and a model School Development Plan was framed with the focal view of Child centered Child friendly School. It's a great deal of support to move forward.

Once the SDP was prepared it has been sent to the respective Department Grama and Zilla Panchayath, Health Department, Donors. Most of the plans were fulfilled by the donors. With this plan 2018-2020, they have rennovated the school, constructed Compound Wall for the safety of school as well as children, Painted school Building, completed Educative Wall paintings, arranged for Benches and desks for the general class as well NALIKALI Classes, ensured space for School Ground and provision for Play materials, arranged for clean drinking water, Handtuig to take food to serve children during midday meal and also Kitchen garden were undertaken.

In the SDMC meeting they planned to call the Parents quarterly Meeting to assess children learning progress and evaluate them. Grievance redressal mechanism will be dealt through Meena Club, Child Rights Club, Children Parliament, monitoring of Suggestion box, Child Protection Committee and the issues will be discussed in the SDMC meetings. Thus the Children safety measures and Protection will be overviewed regularly. All the teachers and related employees and Committee have to read, understand and follow the Child Protection Policy of the school. This Policy is exhibited in the proper place and it is visible to everyone.





An Interface Programme was organized, Children, Child related Government Department Personnes, and SDMC members and teachers together with Education Resource Centre.



In this Interface Road & Transport Officer too invited. Children voiced out for many issues and on the spot RTO promised children to provide bus facility to their village. Out of that very specially to the children School Going time. Now the Bus facility is there to children to reach their School without any fear of Elephants. A Suggestion Box kept and monitored by RTO regularly if any problems and suggestions villagers and children can drop messages in that box.



Meetings with Teachers SDMC, ERC Members

Regular visits were done by Education Resource Centre. Mr. Narayana Kilangody of Sullya ERC Office bearer gave more attention and conducted leadership development programmes and these ERC members frequently visited the school.

Education Department, School Teachers, SDMC Committee, Grama Panchayath, Parents and community were very happy to experience their children receiving special recognition and these children were highlighted in other Villages, Taluk and District too.



To encourage the community and make sense to all parents, the school started to give advertisement of their schools QUALITY to the community: Here they show the fully developed school, its play ground, free Education, Free Books, Shoes, Sox, Note books, Provision of Health checkup and iron and Sanitation pads, extracurricular activities, sports and games facility, provision of nutrition midday meal food along with morning milk, Children Talent show. Thus they exhibit the below poster to highlight their school.



